

# Thomson

Adam Bruce

1885 - 1976

## His Life

Adam Bruce Thomson was born on 22nd February 1885 in Edinburgh. He was often called 'Adam B.' His father, also called Adam Thomson, was born in 1855 in Edinburgh and was a cabinet maker. His mother Marion Ritchie (1857 - 1929) was born in Berwickshire and died in Edinburgh. The couple married in Edinburgh in 1880. Adam B. was one of 5 children.

In 1901 census, age 16, Adam was an apprentice furniture draughtsman.

He attended the Trustees Academy, and between 1908 and 1909 he attended the new Edinburgh College of Art. He also travelled on scholarships to Spain and France.

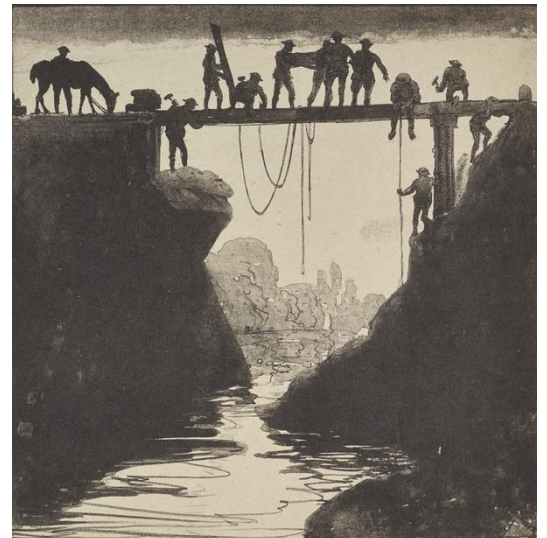
During the First World War, he enlisted in 1916 with the Royal Engineers and gave his occupation as 'artist'. He served in France and gained promotion to Lieutenant. He continued to draw while he was in France and captured some images of the war. This drawing is of the Royal Engineers at work building a bridge at Mons (ex [National Galleries of Scotland](#))

On 15th April 1918, at Colinton, Edinburgh, he married Jessie Inglis Hislop, the sister of fellow artist and friend, Walter Balmer Hislop. The couple had 3 children.

After the war, Adam taught at the Edinburgh College of Art. He retired in 1950 but continued to have an interest in the College and other art institutions. In 1963 he was awarded an O.B.E. for this work.

He painted all over Scotland but was particularly fond of the Scottish Borders and Galloway.

Adam B. Thomson died on 4th December 1976 in Edinburgh.



Royal Engineers Building a Bridge near Mons, 1918, Adam Bruce Thomson  
© The Artist's Family

NATIONAL GALLERIES SCOTLAND

## His Work

Adam Bruce Thomson was an Edinburgh artist who created at least one painting of Gatehouse. He also made an etching of Cairnholy and painted various scenes around the Colvend coast.

There is a very thorough [presentation of Thomson's work](#) on the Scottish Gallery website. Remember to use the fullscreen view to see this in detail.

Try following the links to find examples of this artist's work.. When you have viewed the contents, remember to use your browser's "back" button to return to this page.

[Wikipedia](#)

[In the Artist's Footsteps](#)

[The Scottish Gallery](#)

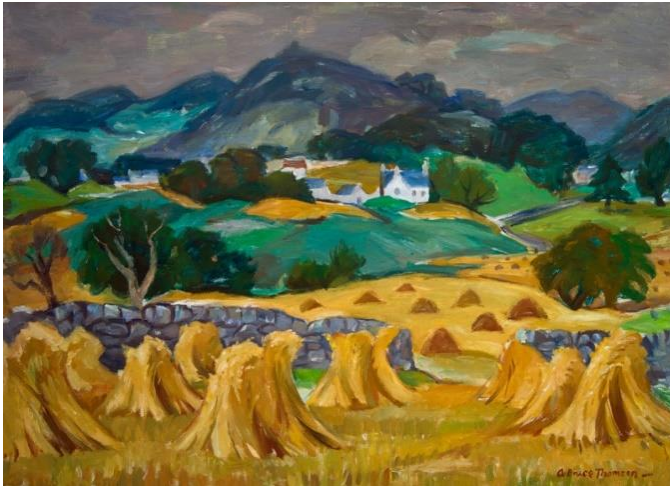
[artnet](#)

[ArtUK](#)



“Gatehouse of Fleet”  
*Through the Park Gates at the top of Ann Street*

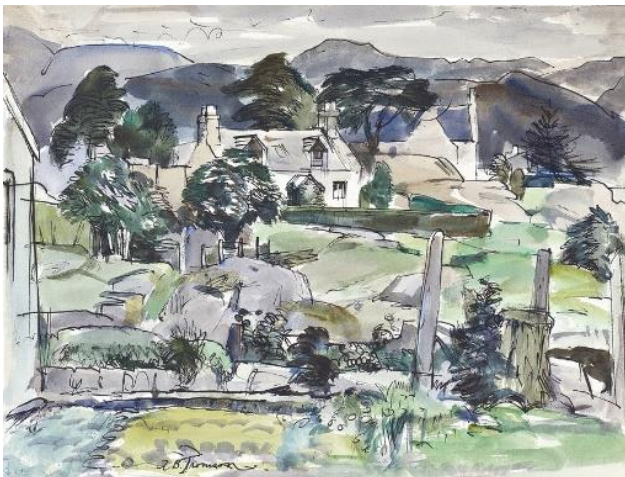
The following examples of his work came from [The Scottish Gallery](#) website (link above)



Harvesting in Galloway



Borders Harvest c.1960 watercolour



Borders Village c.1945 watercolour and pen



self portrait painted c1950