

MacGeorge

William Stewart

1861 - 1931

His Life

William Stewart McGeorge was born on 1st April 1861 in Castle Douglas.

His father David McGeorge was a shoemaker, his mother Janet Martin was a dressmaker.

William attended the Free Church School in Castle Douglas where one of his friends was Samuel Crockett, later known as novelist S.R. Crockett. Samuel used his childhood friend William as the basis for characters in some of his books.

William did not have good health as a child and enjoyed drawing as a way of passing time, which his parents did not discourage.

In 1881 William and Samuel Crockett shared digs in Edinburgh while they were students. William studied at the Royal Institute Art School in Edinburgh. He continued his studies in Antwerp.

Amongst his group of friends was the artist E.A. Hornel who painted a portrait of William.

In the 1901 Edinburgh census he was aged 40, an artist painter, living on his own.

On 9th October 1929 William, aged 68, married Mabel Victoria Monro née Elliot. She had previously been married to artist Hugh Monro, but was widowed in 1928.

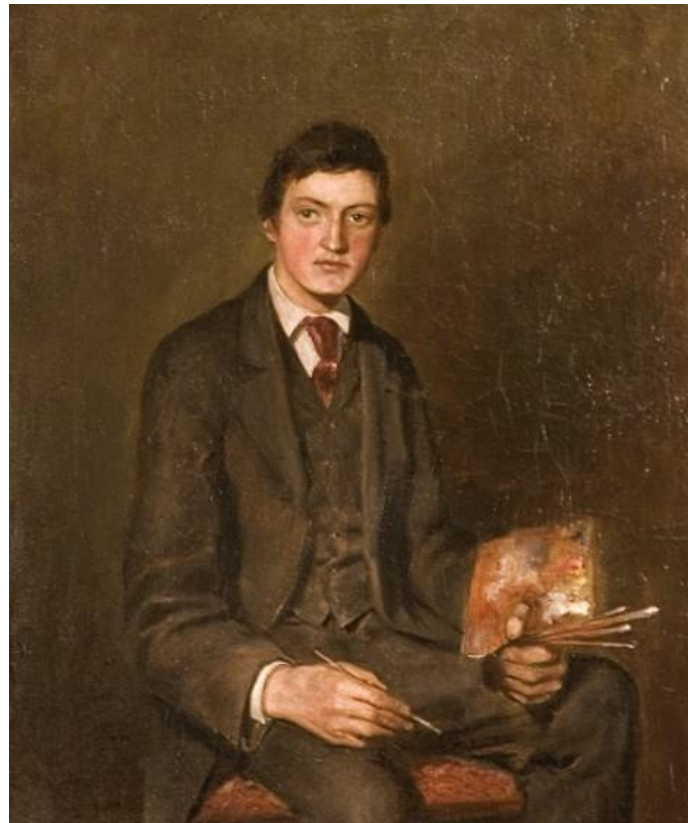
Mabel also painted and has works under her maiden name Mabel Elliot and also as Mabel MacGeorge.

The couple lived in Gifford, outside Edinburgh but spent their summers around Kirkcudbright and district.

William Stewart MacGeorge died in Edinburgh on 9th November 1931. His widow Mabel gifted many of his paintings of East Lothian and Galloway to Haddington Town Council.

Mabel MacGeorge died in 1960.

This is a painting of William Stewart MacGeorge by E A Hornel.



His Work

The links below lead to websites which contain biographical details and paintings by this artist. When you have viewed the contents, remember to use your browser's "back" button to return to this page.

[In the Artists Footsteps](#) - a number of McGeorge's works including two from the Gatehouse area
'Cave at Auchenlair' (Auchenlarie) and 'Port Macadam'

[Invaluable 1](#) [Invaluable 2](#) [artnet](#) [artUK](#)



On the Solway



Woodland on the Solway