

Leitch

William Leighton

1804 - 1883

His Life

William Leighton Leitch was born in Glasgow on 2nd November 1804. His father was Richard Leitch, a soldier.

After school, he started work in a lawyer's office in Glasgow but did not enjoy the work. He then became a weaver and finally an apprentice to a house decorator.

By 1824 he was employed as a scene painter at the Theatre Royal in Glasgow.

The same year he married Susannah Smellie (1803 - 1868).

The couple are believed to have had 5 sons and 2 daughters.

In the late 1820s the family moved to London where he was a scene painter at the Queen's Theatre. He also illustrated books.

In 1833 he took a trip to Europe - eventually arriving in Venice. To help support his family back home he gave art lessons.

He returned to London in 1837 and continued to teach art. His pupils included Queen Victoria and her family - a position he held for 22 years. He is believed to have been with the Royal family at Balmoral Castle and Windsor Castle as well as other residences.

Queen Victoria appreciated his paintings and there are several examples of Leitch's work in the Royal Collection.

William described himself as a landscape artist in various censuses. Painting skills ran in the family for in 1851 his son David was an engraver of wood and in 1861 his son William was a scene painter.

His wife Susannah died in London in 1868.

William died in St John's Wood, London on 25th April 1883. In his will he left over £20,000 to 2 of his grandsons.

Although based in London, Leitch visited Scotland. the Artist's Footsteps web site has examples of his work around Galloway and in particular the Fleet Valley near Rusko Castle.



Portrait of W L Leitch



Drawing of William Leighton Leitch
ex Wikiwand

His Work

The links below lead to websites which contain biographical details and paintings by this artist. When you have viewed the contents, remember to use your browser's "back" button to return to this page.

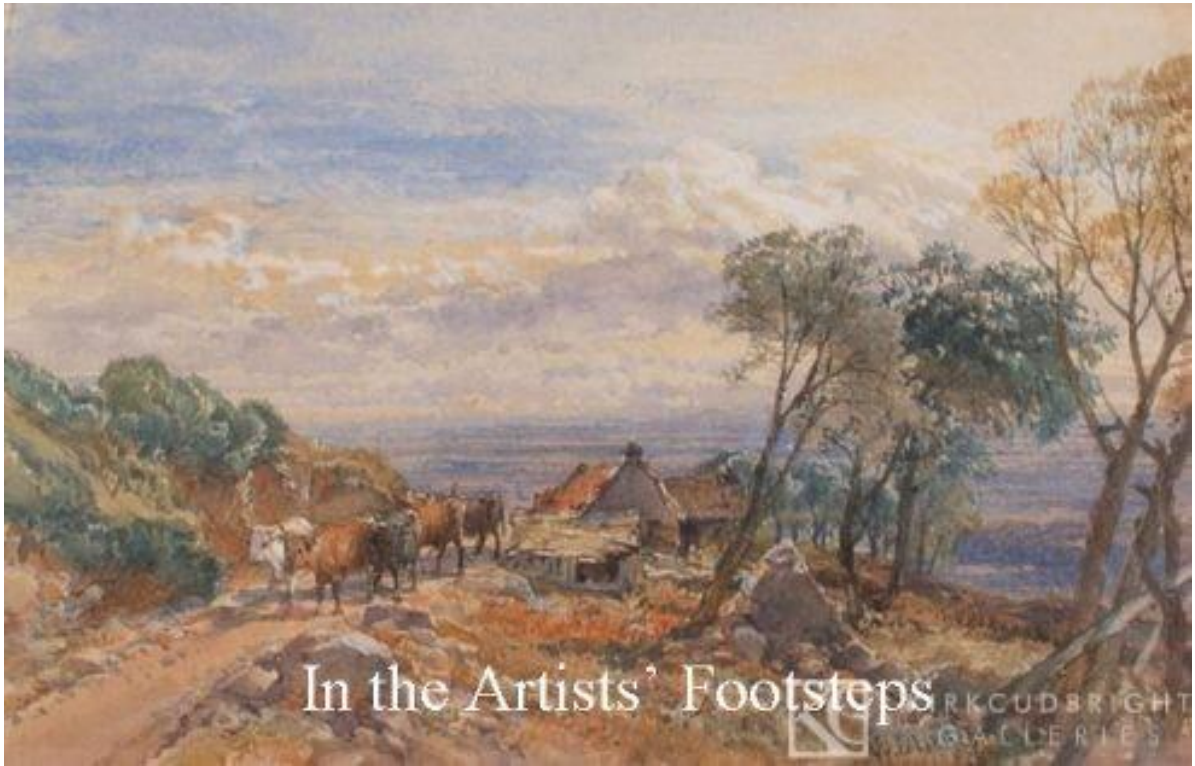
[In the Artists Footsteps](#)

[Abbott and Holder](#)

[Helensburgh Heritage Trust](#) biography

[Wikipedia](#) has a biography

[Invaluable auctions](#)



Near Roscoe (Rusko Tower, Gatehouse of Fleet)